

Assessments

	Fall	Winter	Spring
State/National Summative Assessments	G9-11 PSAT	K-12 LAS Links	G3-8 Smarter Balanced – ELA & Math G11 – SAT G5, 8, 11 NGSS Science HS – AP Tests
State Benchmark Assessments	K-3 Reading – PSF & ORF	K-3 Reading – PSF & ORF	K-3 Reading – PSF & ORF
District Benchmark Assessments	K-2 CCSS Math G3-8 Math Inventory G1-8 Math Fact Fluency G3-10 Reading Inventory	K-2 CCSS Math G3-8 Math Inventory G1-8 Math Fact Fluency K-3 BAS G3-10 Reading Inventory	K-2 CCSS Math G3-8 Math Inventory G1-8 Math Fact Fluency K-3 BAS G3-10 Reading Inventory

District Quarterly Content Assessments – Grades 7-12

	Q1	Q2	Q3	Q4
Math	Math	Math	Math	Math
Social Studies	Social Studies	Social Studies	Social Studies	Social Studies
Science	Science	Science	Science	Science
World Languages	World Languages	World Languages	World Languages	World Languages

Next Generation Accountability, 2017-18		NHPS 1718	State
New Haven School District		% Points Earned	% Points Ea
Indicator			
1a. ELA Performance Index - All Students	SBA gr 3-8, SAT Gr. 11	77.1	90.1
1b. ELA Performance Index - High Needs Students	SBA gr 3-8, SAT Gr. 11	72.2	76.7
1c. Math Performance Index - All Students	SBA gr 3-8, SAT Gr. 11	67.0	83.6
1d. Math Performance Index - High Needs Students	SBA gr 3-8, SAT Gr. 11	62.6	69.3
1e. Science Performance Index - All Students	NGSS Gr 5, 8, 11	.	.
1f. Science Performance Index - High Needs Students	NGSS Gr 5, 8, 11	.	.
2a. ELA Academic Growth - All Students	SBA gr 3-8	58.3	60.7
2b. ELA Academic Growth - High Needs Students	SBA gr 3-8	56.0	55.6
2c. Math Academic Growth - All Students	SBA gr 3-8	53.6	61.9
2d. Math Academic Growth - High Needs Students	SBA gr 3-8	52.2	55.4
English Learner Proficiency Growth	LAS Links		
4a. Chronic Absenteeism - All Students		40.4	77.2
4b. Chronic Absenteeism - High Needs Students		30.4	53.6
5. Preparation for CCR - Percent Taking Courses	AP, College, CTE	85.6	99.7
6. Preparation for CCR - Percent Passing Exams	SAT, AP Tests, ACT, IB	26.9	59.7
7. On-track to High School Graduation		90.1	93.1
8. 4-year Graduation: All Students (2017 Cohort)		85.1	93.5
9. 6-year Graduation: High Needs Students (2015 Cohort)		85.6	87.0
10. Postsecondary Entrance (Graduating Class 2017)		79.6	94.5
11. Physical Fitness (estimated participation rate = 93.1%)	Phys Fitness Test (Yearly)	55.0	66.8
12. Arts Access		77.5	85.3
Accountability Index		65.0	74.9

NHPS Assessment Calendar 2019-20 School Year		End of Marking Period Dates (Grades Due):	CIA Dates - K-8:	CIA Dates - HS:	School-based PD Dates:	District Professional Development Full Day:	ed on SchoolNet N/A - Not Applicable (No Scan Sheets)	DATE SCANNED	
Month	Grades	Subject Area	Assessment	Scan Sheets Printed	Date Admin (Start)	Date Admin (End)	SN Scoring Opens/Scan Sheets Due to Depts.	SN Scoring Closes/Scan Sheets Due to DP	Last Update:
			MP 1: 11/1/2019	13-Jan	3-Feb		9/10/19		
			MP2: 1/17/2020	23-Mar	6-Apr				
			MP 3: 3/27/2020	27-Apr	11-May		11/5/19		
			MP 4: 6/22/2020	18-May	1-Jun				9/25/19
September	9-12	Math	Math Inventory	NA	9/23/19	10/17/19	NA	NA	N/A
September	K-2	Math	CCSS Pretest	N/A	9/9/19	9/30/19	9/9/19	10/4/19	N/A
September	K	ELA	LI, PSF, CAP	N/A	9/9/19	10/4/19	Google Doc (opens 10/8)	Google Doc (closes 10/8)	N/A
September	1	ELA	PSF, ORF	N/A	9/9/19	10/4/19	Google Doc (opens 10/8)	Google Doc (closes 10/8)	N/A
September	2	ELA	ORF	N/A	9/9/19	10/4/19	Google Doc (opens 10/8)	Google Doc (closes 10/8)	N/A
September	3	ELA	ORF	N/A	9/9/19	10/4/19	Google Doc (opens 10/8)	Google Doc (closes 10/8)	N/A
Sept-Oct	9-10	ELA	Reading Inventory (RI)	N/A	9/11/19	9/27/19	N/A	Server closes by 3:30 9/27	N/A
October	3-8	Math	Math Inventory	NA	10/21/19	11/8/19	NA	NA	N/A
Sept-June	Age 8-18	PE	CT Physical Fitness Assessment (Gr 4, 6, 8, HS)	N/A					N/A
October	3-8	ELA	Reading Inventory (RI)	N/A	10/1/19	11/1/19	N/A	Server closes by 3:30 on 11/01/19	N/A
October	1-8	Math	Fact Fluency Assessment #1	N/A	9/23/19	10/4/19	9/23/19	10/7/19	N/A
October	9	ELA-Math	PSAT 8/9 - Grade 9 Only				Schools Choose from: Week of Oct 7, Oct 14 or Oct 21		
October	10-11	ELA-Math	PSAT NMSQT				Wednesday, October 16, 2019		
October	7-12	Soc Studies	Evidence Based Writing Q1	N/A	10/21/19	11/1/19	SN 10/28/19	SN 11/8/19	N/A
October	7-12	Soc Studies	Core Content Q1	N/A	10/21/19	10/25/19	11/1/19		N/A
October	9-12	Math	Quarterly Assessment Q1	N/A	10/21/19	11/1/19	10/21/19	SN 11/6/19	N/A
October	7-12	Science	Quarterly Assessment Q1	N/A	10/21/19	11/1/19	10/21/19	11/8/19	N/A
October	7-12	World Lang	Writing Performance Task Q1 (only)	N/A	10/21/19	11/1/19	N/A	N/A	N/A
November	3-8	Math	SBA IAB#1 -	N/A	11/4/19	11/22/19	N/A	N/A	N/A
Nov-Dec				N/A					N/A
Dec-Jan	K-3	ELA	BAS (all students)	N/A	12/2/19	1/27/20	Google Doc (opens 12/2)	Google Doc (closes 1/29)	N/A
January	3-8	Math	Math Inventory	N/A	1/2/20	1/17/20	NA	NA	N/A
January	PreK	ELA	CAP, LI, PA	N/A					N/A
January	K	ELA	LI	N/A	1/2/20	1/28/20	Google Doc (opens 1/2)	Google Doc (closes 1/29)	N/A
January	K	ELA	PSF	N/A	1/21/20	2/7/20	Google Doc (opens 1/21)	Google Doc (closes 2/7)	N/A
January	1	ELA	ORF, PSF (fall score 40+ do not administer)	N/A	1/21/20	2/7/20	Google Doc (opens 1/21)	Google Doc (closes 2/7)	N/A
January	2	ELA	ORF	N/A	1/21/20	2/7/20	Google Doc (opens 1/21)	Google Doc (closes 2/7)	N/A
January	3	ELA	ORF	N/A	1/21/19	2/7/20	Google Doc (opens 1/21)	Google Doc (closes 2/7)	N/A
Jan-Mar	K-12	ELL	LAS Links	N/A	1/2/20	3/6/20	N/A	N/A	N/A
January	7-12	Soc Studies	Core Content Q2	N/A					N/A
January	7-12	Soc Studies	Evidence Based Writing Q2	N/A	1/7/20	1/17/20	SN 1/10/20	SN 1/22/20	N/A
January	7-12	Science	Quarterly Assessment Q2	N/A	1/6/20	1/17/20	1/6/20	SN 1/22/20	N/A
January	9-12	Math	Quarterly Assessment Q2	N/A	1/6/20	1/17/20	1/6/20	SN 1/22/20	N/A

NHPS Assessment Calendar 2019-20 School Year		End of Marking Period Dates (Grades Due):	CIA Dates - K-8:	CIA Dates - HS:	School-based PD Dates:	District Professional Development Full Day:	Posted on SchoolNet N/A - Not Applicable (No Scan Sheets)	DATE SCANNED	
Month	Grades	Subject Area	Assessment	Scan Sheets Printed	Date Admin (Start)	Date Admin (End)	SN Scoring Opens/Scan Sheets Due to Depts.	SN Scoring Closes/Scan Sheets Due to DP	Last Update:
			MP 1: 11/11/2019	13-Jan	3-Feb		9/10/19		
			MP2: 1/17/2020	23-Mar	6-Apr				
			MP 3: 3/27/2020	27-Apr	11-May		11/5/19		
			MP 4: 6/22/2020	18-May	1-Jun				9/25/19
January	7-12	World Lang	District Assessment (Listening & Reading) Q2	N/A	1/7/20	1/17/20	1/6/20	1/22/20	1/23/20
January	7-12	World Lang	Writing & Speaking Performance Tasks Q2	N/A	1/7/20	1/17/20	1/7/20	1/22/20	N/A
January	3-8	Math	SBA IAB#2	N/A	1/20/20	1/31/20	N/A	N/A	N/A
Jan-Feb	K-2	Math	CCSS Assessment #2	N/A	1/21/20	2/13/20	1/21/20	2/14/20	N/A
Jan-Feb	3-8	ELA	Reading Inventory (RI)	N/A	1/2/20	2/3/20	N/A	Server closes by 3:30 2/3/20	N/A
Jan-Feb	9-12	Math	Math Inventory	NA	1/27/20	2/14/20	NA	NA	NA
Jan-Feb	9-10	ELA	Reading Inventory (RI)	NA	1/7/20	1/31/20	NA	Server closes by 3:30 on 1/31/20	NA
February	1-8	Math	Fact Fluency Assessment #2	N/A	2/3/20	2/13/20	2/3/20	2/14/20	N/A
Febr - June	11	Science	Next Generation Science Standards (NGSS) Standard				February 3 - June 5, 2020		
March	3-8	Math	SBA IAB#3	N/A	3/26/19	4/9/19	N/A	N/A	N/A
March	7-8	Soc Studies	Evidence Based Writing	N/A	3/16/20	3/27/20	3/23/20	SN 4/3/20	N/A
March	7-8	Soc Studies	Core Content Q3						
March	8	Math	Algebra 1 Placement Exam		3/16/20	3/26/20		3/27/20	
March	9-12	Math	Quarterly Assessment Q3	N/A	3/16/20	3/27/20	3/16/20	SN 4/1/20	N/A
March	7-12	Science	Quarterly Assessment Q3						
March	7-12	World Lang	Writing Performance Task Q3 (only)	N/A	3/16/20	3/27/20	3/16/20	4/3/20	N/A
March	11	ELA & Math	SAT						
March - June	5 and 8	Science	Next Generation Science Standards (NGSS) Standard Assessment				March 23 - June 5, 2020		
March-June	3-8 & 11	ELA & Math	CTAA (CT Alternate Assessment)				March 23 - June 5, 2020		
March-June	3-8	ELA & Math	Smarter Balanced Assessments				State Window: March 23 - June 5, 2020		
March - June	5 & 8 & 11	Science	CT Alternate Science Assessment (CTAS)				March 23 - June 5, 2020		
April-May	9-12	Math	Math Inventory	N/A	4/30/20	5/21/20	N/A	N/A	N/A
April-May	K	ELA	PSF	N/A	4/27/20	5/22/20	Google Doc (opens 4/27)	Google Doc (closes 5/22)	N/A
May	K	ELA	LI	N/A	5/1/20	5/29/20	Google Doc (opens 5/1)	Google Doc (closes 5/29)	N/A
May	1	ELA	ORF, PSF (fall score 40+ do not administer)	N/A	4/27/20	5/22/20	Google Doc (opens 4/27)	Google Doc (closes 5/22)	N/A
May	2	ELA	ORF	N/A	4/27/20	5/22/20	Google Doc (opens 4/27)	Google Doc (closes 5/22)	N/A
May	3	ELA	ORF	N/A	4/27/20	5/22/20	Google Doc (opens 4/27)	Google Doc (closes 5/22)	N/A
May	9-12	AP	AP Testing	N/A	TBD	TBD	N/A	N/A	N/A
May	PreK	ELA	CAP, LI, PA	N/A			5/1/19	5/31/19	N/A
May	K-3	ELA	BAS (grade 3 students proficient or higher on Winter RI AND an M or higher need not to administer)	N/A	5/1/20	6/12/20	Google Doc (opens 5/1/19)	Google Doc (closes 6/12/20)	N/A
May-June	3-8	Math	Math Inventory	N/A	5/26/20	6/12/20	N/A	N/A	N/A

NHPS Assessment Calendar 2019-20 School Year		End of Marking Period Dates (Grades Due):	CIA Dates - K-8:	CIA Dates - HS:	School-based PD Dates:	District Professional Development Full Day:	ed on SchoolNet N/A - Not Applicable (No Scan Sheets)	DATE SCANNED
Month	Grades	Subject Area	CIA Dates - K-8:	CIA Dates - HS:	Date Admin (Start)	Date Admin (End)	SN Scoring Opens/Scan Sheets Due to Depts.	SN Scoring Closes/Scan Sheets Due to DP
May/June	3-8	ELA	13-Jan 23-Mar 27-Apr 18-May	3-Feb 6-Apr 11-May 1-Jun				Server closes by 3:30 on 6/5/20 N/A
May/June	9-10	ELA						Server closes by 3:30 on 5/27/20 N/A
May/June	Age 8-18	PE						TBD N/A
May/June	K-2	Math						6/15/20 N/A
June	1-8	Math						6/15/20 N/A
June	7-12	Soc Studies						SN 6/20/20 N/A
June	7-12	Soc Studies						SN (closes 6/10) N/A
June	7-12	Science						
June	7-12	World Lang						6/20/20 6/21/20
June	7-12	World Lang						SN closes last day N/A

2018-19 State Assessment Results

October 16, 2019

Michele Sherban, Ed.D.

Assessments

	Fall	Winter	Spring
State/National Summative Assessments	G9-11 PSAT	K-12 LAS Links	G3-8 Smarter Balanced – ELA & Math G11 – SAT G5, 8, 11 NGSS Science HS – AP Tests
State Benchmark Assessments	K-3 Reading – PSF & ORF	K-3 Reading – PSF & ORF	K-3 Reading – PSF & ORF
District Benchmark Assessments	K-2 CCSS Math G3-8 Math Inventory G1-8 Math Fact Fluency G3-10 Reading Inventory	K-2 CCSS Math G3-8 Math Inventory G1-8 Math Fact Fluency K-3 BAS G3-10 Reading Inventory	K-2 CCSS Math G3-8 Math Inventory G1-8 Math Fact Fluency K-3 BAS G3-10 Reading Inventory

District Quarterly Content Assessments – Grades 7-12

	Q1	Q2	Q3	Q4
Math	Math	Math	Math	Math
Social Studies	Social Studies	Social Studies	Social Studies	Social Studies
Science	Science	Science	Science	Science
World Languages	World Languages	World Languages	World Languages	World Languages

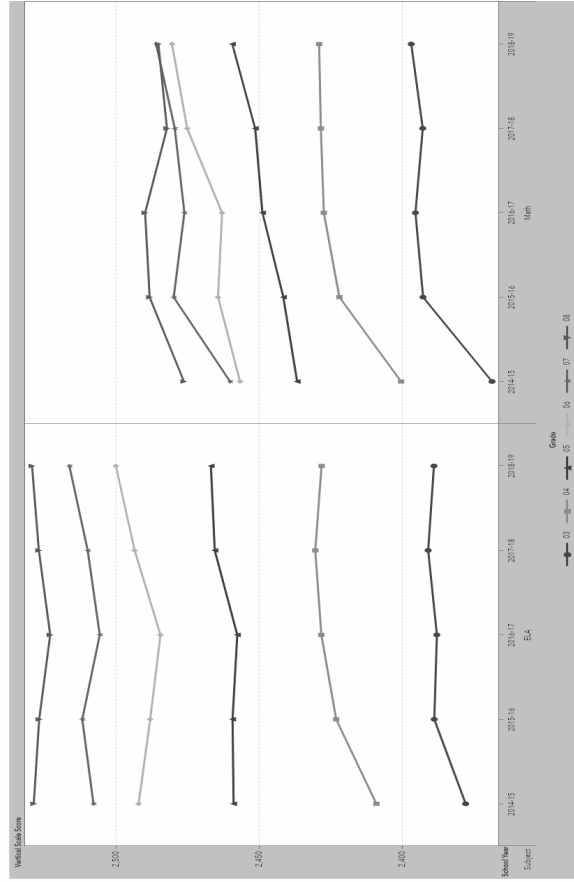
Smarter Balanced Achievement

District	Subject	2015-16	2016-17	2017-18	2018-19	2019	Change 2017 to 2018 to 2019
State of CT	ELA	55.6	54.2	55.3	55.7	1.1	0.4
State of CT	Math	44.0	45.6	46.8	48.1	1.2	1.3
Bridgeport School District	ELA	22.5	22.4	25.7	27.4	3.3	1.7
Bridgeport School District	Math	9.9	13.4	14.9	15.7	1.5	0.8
Hartford School District	ELA	25.8	21.9	24.2	24.5	2.3	0.3
Hartford School District	Math	16	15.5	18.6	18.2	3.1	-0.4
New Haven School District	ELA	32.1	31.4	33.5	34.4	2.1	0.9
New Haven School District	Math	18.5	20.8	21.3	22.5	0.5	1.2
Waterbury School District	ELA	26.9	26.1	26.5	30.3	0.4	3.8
Waterbury School District	Math	16	17.6	19.2	20.2	1.6	1.0

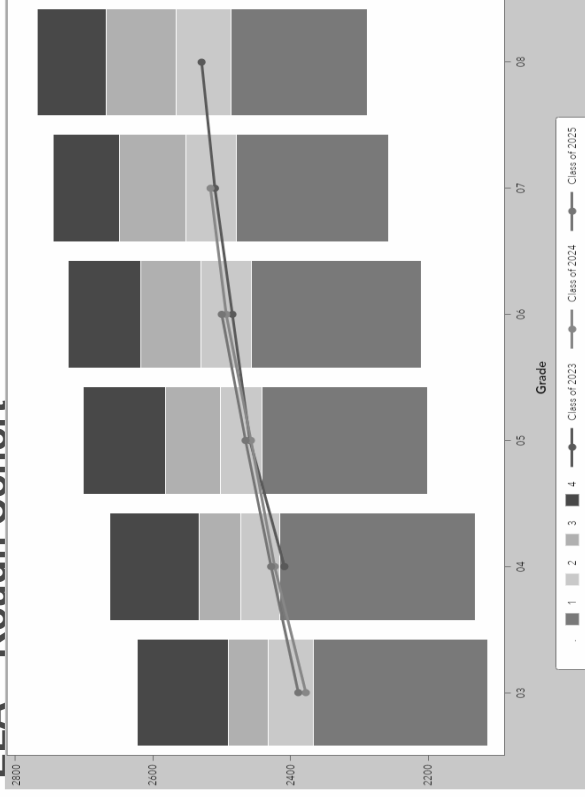
ELA – Closing the Gap

	2015-16	2016-17	2017-18	2018-19	2019	Change 2016 to 2019
State of CT	55.6	54.2	55.3	55.7	0.1	
New Haven School District	32.1	31.4	33.5	34.4	2.3	
Gap	23.5	22.8	21.8	21.3	2.2	

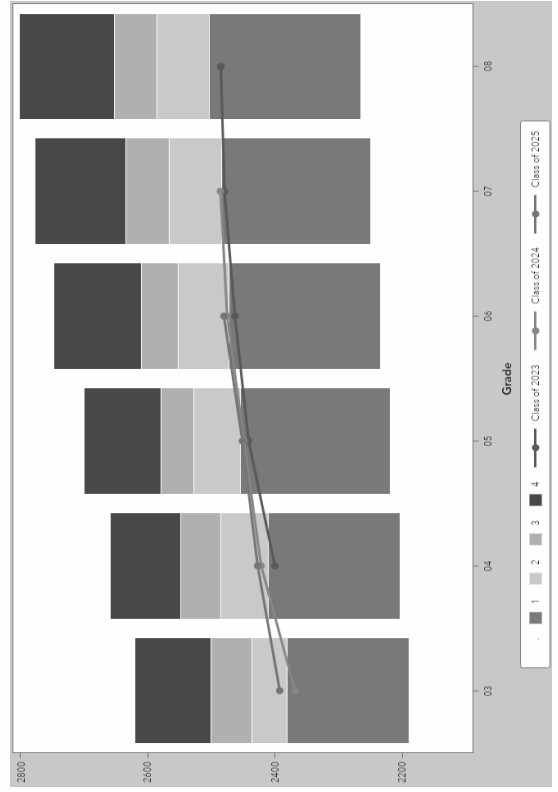
SBA Grade Level Trends



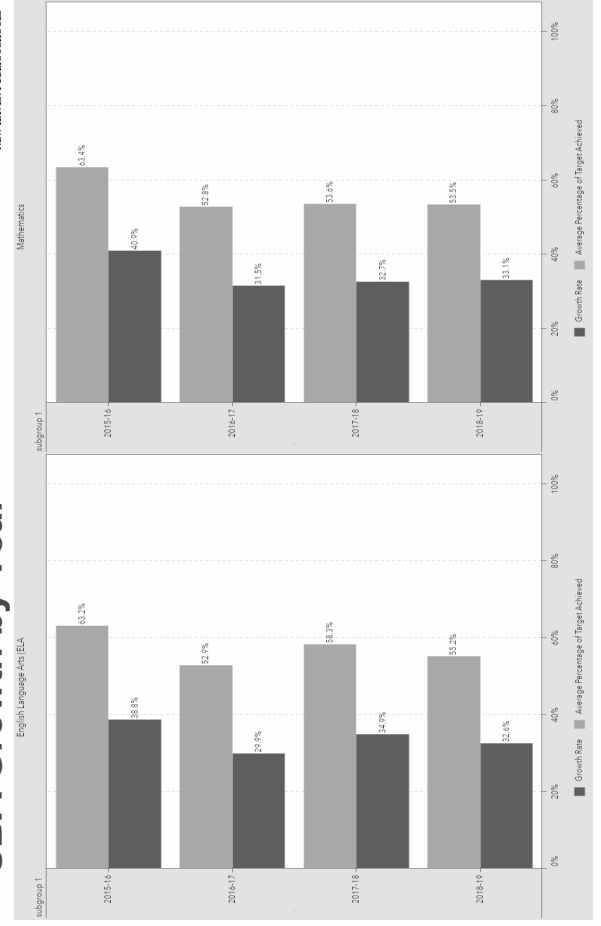
ELA – Rough Cohort



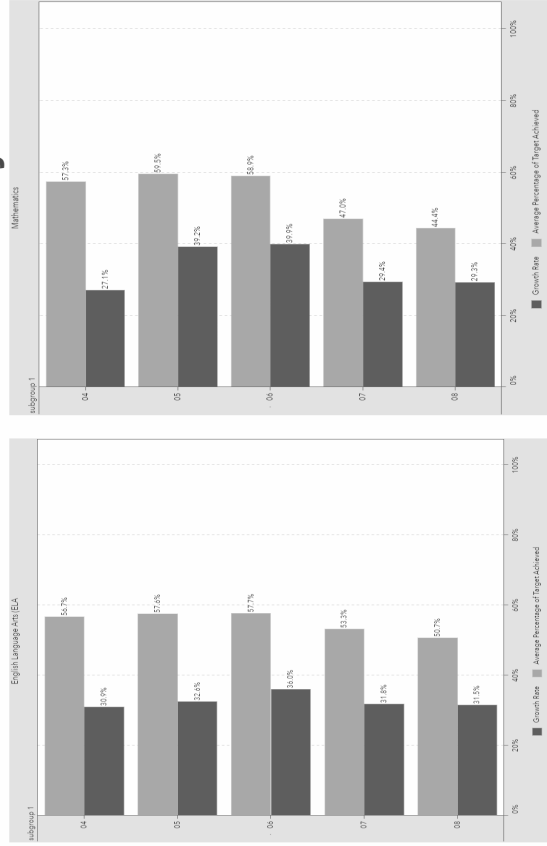
Math – Rough Cohort



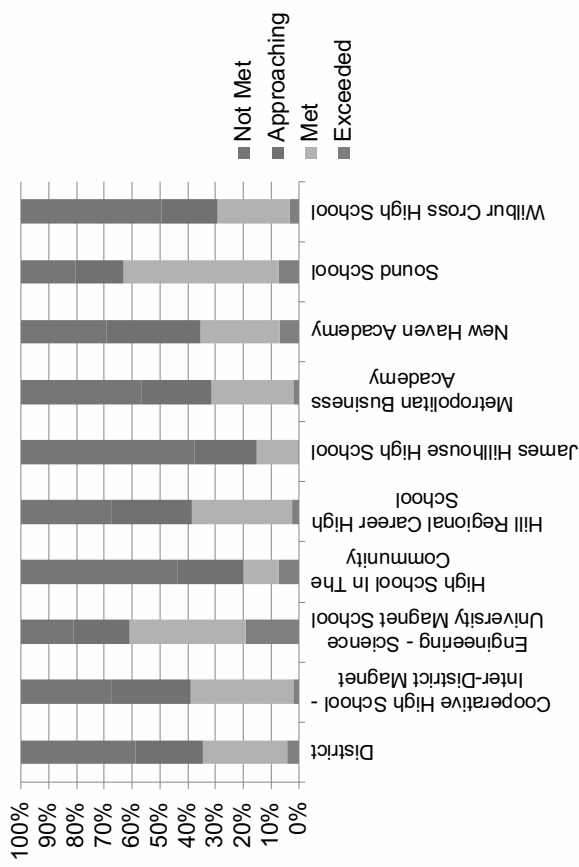
SBA Growth by Year



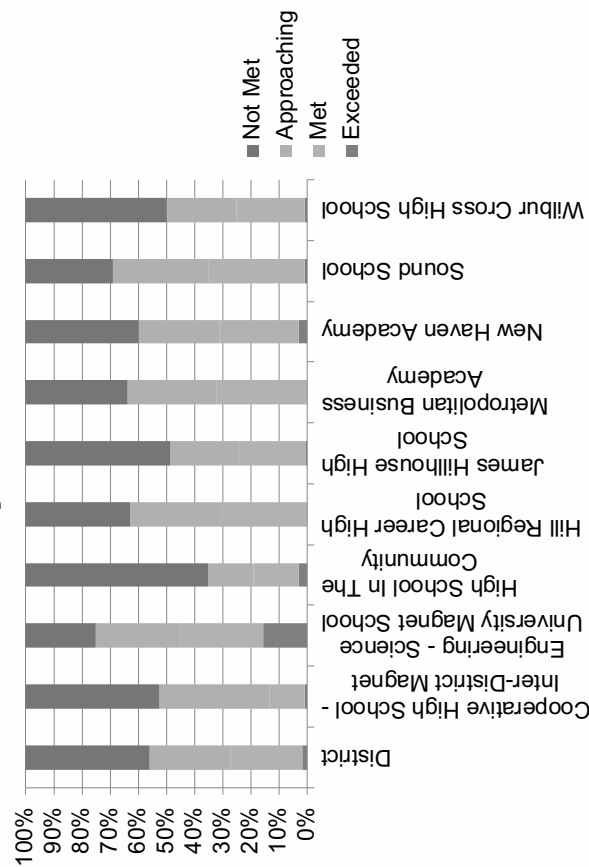
2018-19 Smarter Balanced Growth by Grade



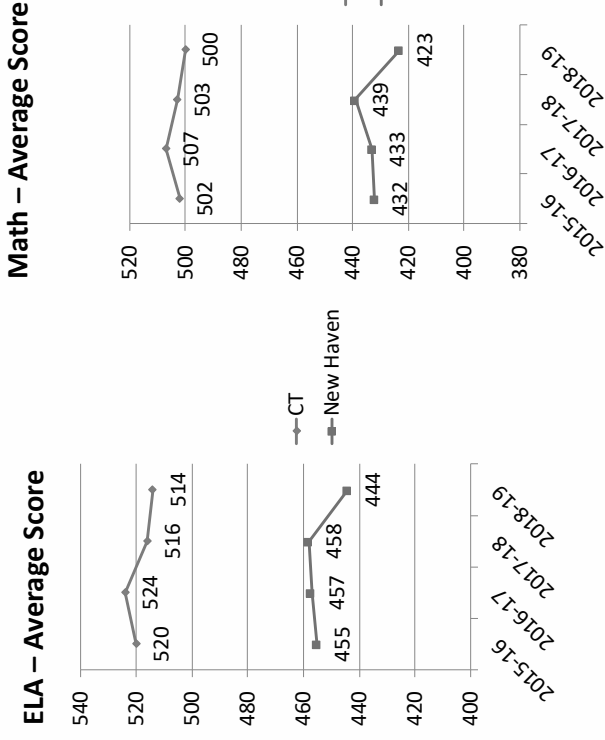
CT SAT School Day - ELA



CT SAT School Day - Math



CT School Day SAT Trends



Assessment Planning Summary

Board policies, job descriptions, and other documents provided to the auditors for review, combined with interviews and campus observations, do not provide sufficient evidence of a coordinated, district-wide approach to selecting assessment tools, implementing them, and using their results to inform instruction, evaluate programs, and improve effectiveness of services across the system. One of the characteristics associated with a comprehensive student assessment plan was fully in place in the New Haven Public Schools, and another three were partially met with the documented direction found in policy and other sources. Consequently, the auditors concluded that planning for student assessment to effectively generate and use achievement data, inform instruction, and facilitate student mastery of the curriculum is not fully established nor adequate.

Finding 4.2: The scope of student assessment does not meet audit standard to monitor student learning and provide valid feedback to inform curriculum evaluation.

The scope of assessment in a system provides a measurement of the evaluation of the taught curriculum in all grade levels and courses toward attaining desired levels of achievement. This additionally generates insight into making meaningful decisions about district curriculum and instructional processes to further assist student learning. When assessments are administered in each course and grade, they generate data that inform stakeholders of the extent to which students have mastered the entire curriculum. If the scope of assessment does not cover all grade levels and courses, educators cannot effectively evaluate curriculum and instruction. A comprehensive assessment system provides both formative and summative assessments for student achievement to contribute to control of the overall educational program. The audit standard is that 100% of core course offerings (English language arts/reading, mathematics, science, and social studies) and 70% of all other courses are formally assessed.

To determine the scope of formative and summative assessments in New Haven Public Schools, auditors reviewed board policies, curriculum documents, and job descriptions provided by district officials, and other documents available on the district and state websites. Interviews with school district personnel also provided information regarding the current state of the district assessment system. Overall, auditors determined that the scope of student assessment did not meet audit standard, although formative assessments were present for all core areas in grades K-8. In total, 17% of all courses have formative assessments and 9% have summative assessments. In addition, auditors found no board policies that provided direction on assessment, and no comprehensive district assessment plan (see [Finding 4.1](#)). Current assessments do not provide adequate feedback to support sound curricular decisions and inform district stakeholders regarding student learning and mastery (see also [Finding 2.4](#)).

In order to determine the scope of district assessment, the auditors examined information provided by district officials to compile a list of formative and summative assessments administered to students. That list is displayed in [Exhibit 4.2.1](#).

Exhibit 4.2.1

**Summary of Formative and Summative Assessments Administered
New Haven Public Schools
April 2019**

Student Assessment	Administered in Grade(s)	Description/Subject(s)	Type
DIBELS	K-3	ELA	Formative
Benchmark Assessment System (BAS)	K-3	ELA	Formative
Reading Inventory	3-10	ELA	Formative, norm-referenced
SAT Reading Quarterly Tests	11-12	ELA	Formative
Writing Performance Tasks	K-8	ELA	Formative
Common Core State Standards (CCSS) Pretest and Posttest	K-2	Mathematics	Formative
K-2 Math Skills Assessment	K-2	Mathematics	Formative
Fact Fluency Assessment	1-7	Mathematics	Formative
Math Inventory	2-12	Mathematics	Formative, norm-referenced
Smarter Balanced Assessment Interim Assessment Block (SBA IAB)	3-8	Mathematics	Formative
Pre-Algebra Performance Task	8	Mathematics	Formative
Algebra I Placement Exam	8	Mathematics	Formative
Math Quarterly Tests	9-12	Mathematics	Formative
PSAT 8/9	8-9	SAT Reasoning Test predictor for ELA and mathematics	Formative
PSAT/NMSQT	10-11	SAT Reasoning Test predictor for ELA and mathematics	Formative
Science Kit Formative Assessments	K-6	Science	Formative
Core Content Quarterly Tests	7-12	Science, Social Studies	Formative
Suggested Assessments	K-6	Social Studies	Formative
Evidence Based Writing	7-12	Social Studies	Formative
Quarterly Performance Tasks and Assessments	7-12	World Languages	Formative
Unit Assessments and Rubrics	2-8	Art	Formative
Assessment Rubric	K-6	General Music	Formative
Assessment Template	6-8	Band	Formative
Performance Tasks	K-8	Physical Education	Formative
Benchmarks	9-12	Physical Education	Formative
Smarter Balanced Assessment	3-8	ELA and Mathematics	Summative, criterion-referenced
Next Generation Science Standards (NGSS) Assessment	5, 8, 11	Science	Summative
National Assessment of Educational Progress (NAEP)	4, 8, 12	Mathematics, ELA, Science	Summative
SAT Reasoning Test	11	ELA and Mathematics	Summative

Exhibit 4.2.1 (continued)
Summary of Formative and Summative Assessments Administered
New Haven Public Schools
April 2019

Student Assessment	Administered in Grade(s)	Description/Subject(s)	Type
Advanced Placement (AP) Exams: English Literature & Composition, English Language & Composition	9-12	ELA	Summative
Advanced Placement (AP) Exams: Calculus AB, Statistics	9-12	Mathematics	Summative
Advanced Placement (AP) Exams: Biology, Chemistry, Environmental Science, Physics	9-12	Science	Summative
Advanced Placement (AP) Exams: Government & Politics, Macroeconomics, Microeconomics, Psychology, U.S. History, World History, Human Geography	9-12	Social Studies	Summative
Advanced Placement (AP) Exams: Spanish Literature, Spanish Language	9-12	World Languages	Summative
Advanced Placement (AP) Exams: 2-D Design, 3-D Design, Drawing Portfolio, Music Theory	9-12	Art	Summative
Advanced Placement (AP) Exams: Comparative Government & Politics, Computer Science, Computer Science Principles	9-12	Non-Core: Other Electives	Summative
Connecticut Alternative Assessment (CTAA)	3-8, 11	ELA and Mathematics	Summative
Connecticut Alternate Science Assessment (CTAS)	5, 8, 11	Science	Summative
LAS Links	K-12	English Language Learner Progress Monitoring	Summative
Connecticut (CT) Physical Fitness Assessment	4, 6, 8, Given once in 9-12	Physical Education	Summative

Sources: District Assessment Calendar 2018-19, interviews, and district documents provided to auditors.

The auditors noted the following about Exhibit 4.2.1:

- The district has 25 formative assessments and nine summative assessments, as *Advanced Placement* exams are viewed as one type of summative assessment.
- Both criterion- and norm-referenced assessments are utilized in the district.
- The district uses both *DIBELS* and the *Benchmark Assessment System (BAS)* in grades K-3 ELA.
- Ten formative assessments are listed for mathematics.
- Six summative assessments are listed for ELA and mathematics.

In order to determine the scope of the assessment program, the audit team compared both core (English language arts/reading, mathematics, science, and social studies) and non-core courses offered at each grade level to the formative and summative assessments administered at those grade levels. To reach adequate threshold, assessment must be administered to 100% of the core academic subjects and at least 70% of non-core academic subjects taught in the school district. The results are displayed in Exhibits 4.2.2, 4.2.3, and 4.2.4.

Exhibit 4.2.2 summarizes the scope of formative and summative assessments for core and non-core courses in grades K-8.

Exhibit 4.2.2

**Scope of Formative and Summative Assessment by Discipline Area in Grades K-8
New Haven Public Schools
April 2019**

Subject Area	Grade Level									Number of Courses	Number of Courses with Formative Assessments	Number of Courses with Summative Assessments
	K	1	2	3	4	5	6	7	8			
CORE COURSES												
ELA												
Reading/Language Arts	F	F	F	F, S	F, S	F, S	F, S	F, S	F, S	9	9	6
Writing	F	F	F	F	F	F	F	F	F	9	9	0
Mathematics												
Mathematics	F	F	F	F, S	F, S	F, S	F, S	F, S	F, S	9	9	6
Pre-Algebra									F	1	1	0
Science												
Science	F	F	F	F	F, S	F, S	F	F	F, S	9	9	3
Social Studies	F	F	F	F	F	F	F	F	F	9	9	0
Total Core Courses Requiring Assessments										46		
Total Core Courses with Assessments											46	15
Percent of Total Scope of Core Assessments											100%	33%
NON-CORE COURSES												
Music												
General Music	F	F	F	F	F	F	F	O	O	9	7	0
Band							F	F	F	3	3	0
Other Disciplines												
Art	O	O	F	F	F	F	F	F	F	9	7	0
Health	O	O	O	O	O	O	O	O	O	9	0	0
Physical Education	F	F	F	F	F, S	F	F, S	F	F, S	9	9	3
Total Non-Core Courses Requiring Assessments										39		
Total Non-Core Courses with Assessments											26	3
Percent of Total Scope of Non-Core Assessments											67%	8%
Key: Spaces Blacked Out = Subject not taught at this grade level O = Course taught but no assessment available F = Formative assessment available S = Summative assessment available												
Sources: District Assessment Calendar 2018-19 and district documents provided to auditors.												

Exhibit 4.2.2 shows the scope of assessed curriculum for grades K-8 according to the assessment information provided to auditors. The auditors noted the following from information in Exhibit 4.2.2:

- Forty-six core courses and 39 non-core courses in grades K-8 require assessments.
- All core areas have formative assessments in grades K-8.
- Approximately one-third of core areas have summative assessments in grades K-8.
- Two-thirds of non-core areas have formative assessments in grades K-8.
- Three of 39 non-core courses, or 8%, have summative assessments in grades K-8.
- Physical education has the most assessments of the non-core areas with nine formative assessments and three summative assessments in grades K-8.

- Health does not have any formative or summative assessments in grades K-8.
- The overall rate of core and non-core assessment in grades K-8 is 85% for formative assessments and 21% for summative assessments.

The scope of formative assessment for core courses in grades K-8 is 100%, which meets the audit standard for scope. However, the overall scope of summative assessment for non-core courses in grades K-8 does not meet the audit standard of 70%. Likewise, the overall scope for non-core courses for both formative and summative assessment is below the audit standard of 70%. Therefore, the scope does not meet audit standard to provide student progress information and data for curriculum and instructional decision making.

Auditors reviewed the 546 core and non-core high school courses in New Haven Public Schools (see [Exhibit 2.2.3](#)). [Exhibit 4.2.3](#) compares the number of formative and summative assessments for each of the core and non-core high school courses.

Exhibit 4.2.3
Scope of Formal Assessment by Discipline Area in Grades 9-12
New Haven Public Schools
April 2019

Content Area	Number of Courses	Number of Formative Assessments	Number of Summative Assessments
Core Content Areas			
ELA	35	7	8
Mathematics	43	11	8
Science	61	4	7
Social Studies	48	4	7
Totals	187	26	30
Percentage of Core Courses Assessed		14%	16%
Non-Core Content Areas			
World Language	62	6	2
Arts	67	0	4
Physical Education	2	2	1
Other Electives	228	0	3
Subtotal Non-Core Content Areas	359	8	10
Percentage of Non-Core Courses Assessed		2%	3%
Total	546	34	40
Percentage of Core and Non-Core Courses Assessed		6%	7%
<i>Sources: District Assessment Calendar 2018-19 and district documents provided to auditors.</i>			

[Exhibit 4.2.3](#) shows the following:

- A total of 546 courses, including 187 core and 359 non-core, in grades K-8 require assessments.
- Fourteen percent of high school core courses have formative assessments, and 16% have summative assessments.
- Two percent of high school non-core courses have formative assessments, and 3% have summative assessments.

- In all, 6% of high school courses have formative assessments, and 7% have summative assessments.
- All high school courses have more summative assessment than formative assessments.
- Mathematics has the most assessments in the core areas with 11 formative assessments and 8 summative assessments.
- The arts and other electives do not have any formative assessments.
- Physical education has the least number of summative assessments (1) in the non-core high school courses.

To be considered adequate, the scope of assessment must be 100% for the four core areas and at least 70% for non-core areas. The scope of high school courses did not meet audit standard.

Exhibit 4.2.4 summarizes the formative and summative assessments administered for all grade levels and courses.

Exhibit 4.2.4

**Scope of Formative and Summative Assessment by Core and Non-Core Area in Grades K-12
New Haven Public Schools
April 2019**

Grade Levels	Core Areas		Non-Core Areas		Total Areas	
	Total Core Offerings	Core Areas with Formative Assessments	Total Non-Core Offerings	Non-Core Areas with Formative Assessments	Total Course Offerings	Total Areas with Formative Assessments
K-8	46	46	39	26	85	72
9-12	187	26	359	8	546	34
Totals	233	72	398	34	631	106
Percentage of District Curriculum with Formative Assessments		31%	9%		17%	
Grade Levels	Core Areas		Non-Core Areas		Total Areas	
	Total Core Offerings	Core Areas with Summative Assessments	Total Non-Core Offerings	Non-Core Areas with Summative Assessments	Total Course Offerings	Total Areas with Summative Assessments
K-8	46	15	39	3	85	18
9-12	187	30	359	10	546	40
Totals	233	45	398	13	631	58
Percentage of District Curriculum with Summative Assessments		19%	3%		9%	
Total Number of Formative and Summative Assessments		117	47		164	
Percentage of District Curriculum with Either Formative or Summative Assessment		50%	12%		26%	

Sources: District Assessment Calendar 2018-19 and district documents provided to auditors.

Exhibit 4.2.4 shows:

- A total of 631 courses, including 233 core and 398 non-core, in grades K-12 require assessments.
- Thirty-one percent of all core courses have formative assessments, and 19% have summative assessments.
- Nine percent of all non-core courses have formative assessments, and 3% have summative assessments.
- Seventeen percent of all district courses have formative assessments, and 9% have summative assessments.
- There are 38 more formative assessments in core courses than non-core courses in grades K-12.
- There are 32 more summative assessments in core courses than non-core courses in grades K-12.
- There are 48 more formative assessments than summative assessments for grades K-12.
- A total of 117 formative and summative assessments represent 50% of the 233 core courses.
- A total of 47 formative and summative assessments represent 12% of the 398 non-core courses.
- A total of 164 formative and summative assessments represent 26% of the 631 core and non-core courses.

The overall scope of assessment in grades K-12 does not meet the audit standard of 100% for core courses or 70% for non-core courses.

The auditors interviewed district and school administrators, teachers, parents, and students concerning the existing assessments in New Haven Public Schools. District staff members spoke about testing and assessment in general:

- “We need to streamline the assessments. If it is not being used, why do we use it?” (District Administrator)
- “Assessment is not aligned with instruction. Test before it is taught. Giving the district a false report.” (School Administrator)
- “We spend a lot of time assessing our students. I don’t think the assessments are aligned with the standards that we’re teaching at that point and time.” (Teacher)
- “There is a lack of assessment to guide instruction.” (District Administrator)
- “Teachers in the high schools seem to be independent in what they do as far as assessment is concerned.” (District Administrator)
- “Common formative assessment is not a thread throughout the district, not systematic. Too many pockets, piecemeal approaches.” (District Administrator)
- “There is a persistent gap in our scores. Our ability to address and impact this continues to be a struggle for us.” (District Administrator)

Comments indicated that although many assessments are available district-wide, their implementation and usefulness in the feedback process are not consistent.

Assessment Scope Summary

The scope of formative and summative assessment of the written curriculum in New Haven Public Schools does not meet audit standard to evaluate student achievement or guide instructional effectiveness. As previously mentioned, in order to meet audit criteria, 100% of the core areas of English language arts/reading, mathematics, science, and social studies and at least 70% of the remaining courses must have assessments. Overall, the scope of assessment for both core and non-core courses in New Haven Public Schools is 17% for formative assessment and 9% for summative assessment.